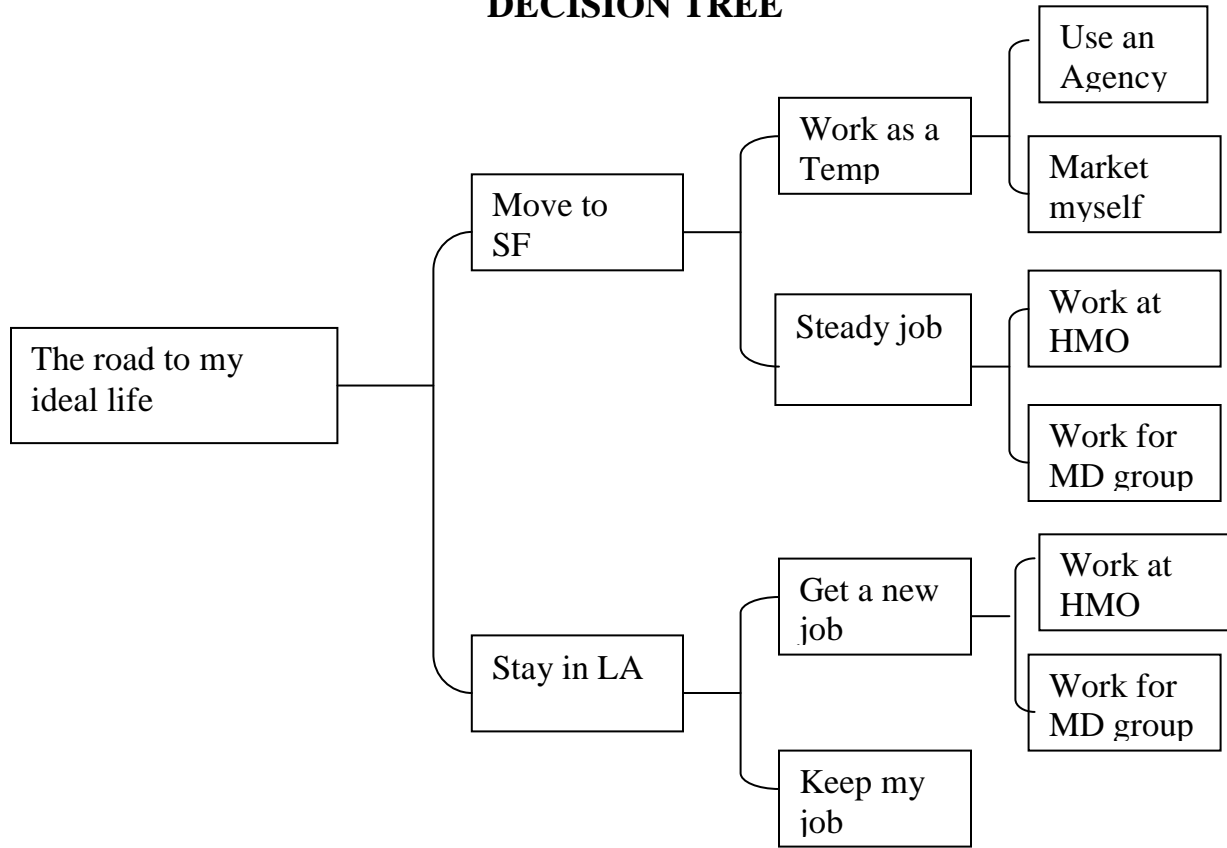


Decision Tools for Jane Case Study:

DECISION TREE



CAREER CRITERIA FILTER

MINIMUM	IDEAL
Salary: \$35k per year Vacation: 1 week after 1 year Hours: 48 on call 1 weekend per month Benefits: health Retirement: 0 Commute: 1 hour Office: up to 5 doctors Responsibilities: clinical and office Paperwork: 50%	Salary \$75k per year Vacation: accrue 1 day per month Hours: 40 no weekends Benefits: health, dental, vision Retirement: pension with 5 year vesting Commute: 15 minutes Office: 1 doctor Responsibilities: office only Paperwork: 20% No Medicare patients Tuition reimbursement Cost of living raises

MODIFIED BEN FRANKLIN LEDGER

What are the Pros and Cons of staying in LA as compared to moving to San Francisco?			
PRO		CON	
Stay in LA	Move to SF	Stay in LA	Move to SF

WEIGHTED CRITERIA TABLE

QUESTION: Which job would best meet my criteria?

CRITERIA	WEIGHT 1-10	DR ROGERS	DR MOORE	DR JOHN
Money	5	4X5=20	8X5=40	7X5=35
Benefits	3	7X3=21	4X3=12	4X3=12
Environment	6	3X6=18	6X6=36	9X6=54
People	6	3X6=18	5X6=30	8X6=48
Duties	8	5X8=40	9X8=72	7X8=56
Commute	2	8X2=16	3X2=6	5X2=10
Hours	5	8X5=40	7X5=35	9X5=45
Opportunity	8	3X8=24	9X8=72	7X8=56
TOTAL:		197	303	316